



上海交通大学
SHANGHAI JIAO TONG UNIVERSITY



安泰经管学院
ANTAI COLLEGE
Economics · Management

ANTAI COLLEGE

ECONOMICS AND MANAGEMENT

A world-class business school
firmly rooted in China



Shanghai



Shenzhen



Singapore

1

PART I

Shanghai Jiao Tong University



2

PART II

Antai College



3

PART III

International Reputation



4

PART IV

Programs



5

PART V

Research



6

PART VI

Impact



7

PART VII

New Initiatives

8

PART VIII

Contact us

CONTENTS





上海交通大学
SHANGHAI JIAO TONG UNIVERSITY



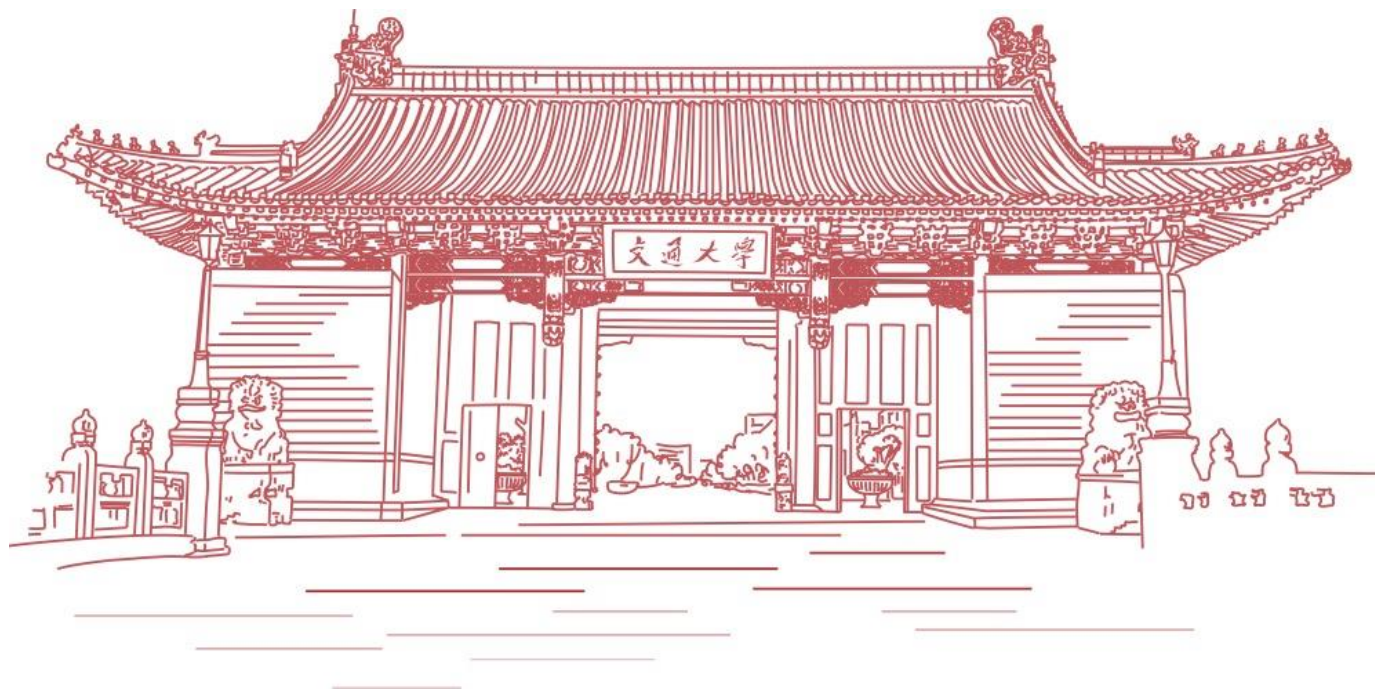
安泰经管学院
ANTAI COLLEGE
Economics · Management

*A world-class
business school
firmly rooted in China*

Shanghai Jiao Tong University

SJTU

Part I





Shanghai Jiao Tong University

Founded in 1896 with the name Nanyang Public University, Shanghai Jiao Tong University (SJTU) is one of China's oldest and most prestigious institutions of higher learning.

With five campuses around the Shanghai area, SJTU has more than 45,000 students and 3,500 full-time faculty members. More than 50 of its faculty are members of the Chinese Academy of Sciences and the Chinese Academy of Engineering.

Since our inception our institution has pioneered business education in China.

Today, management science is one of SJTU's three top academic fields, along with engineering and medical science.

1896



上海交通大学
SHANGHAI JIAO TONG UNIVERSITY



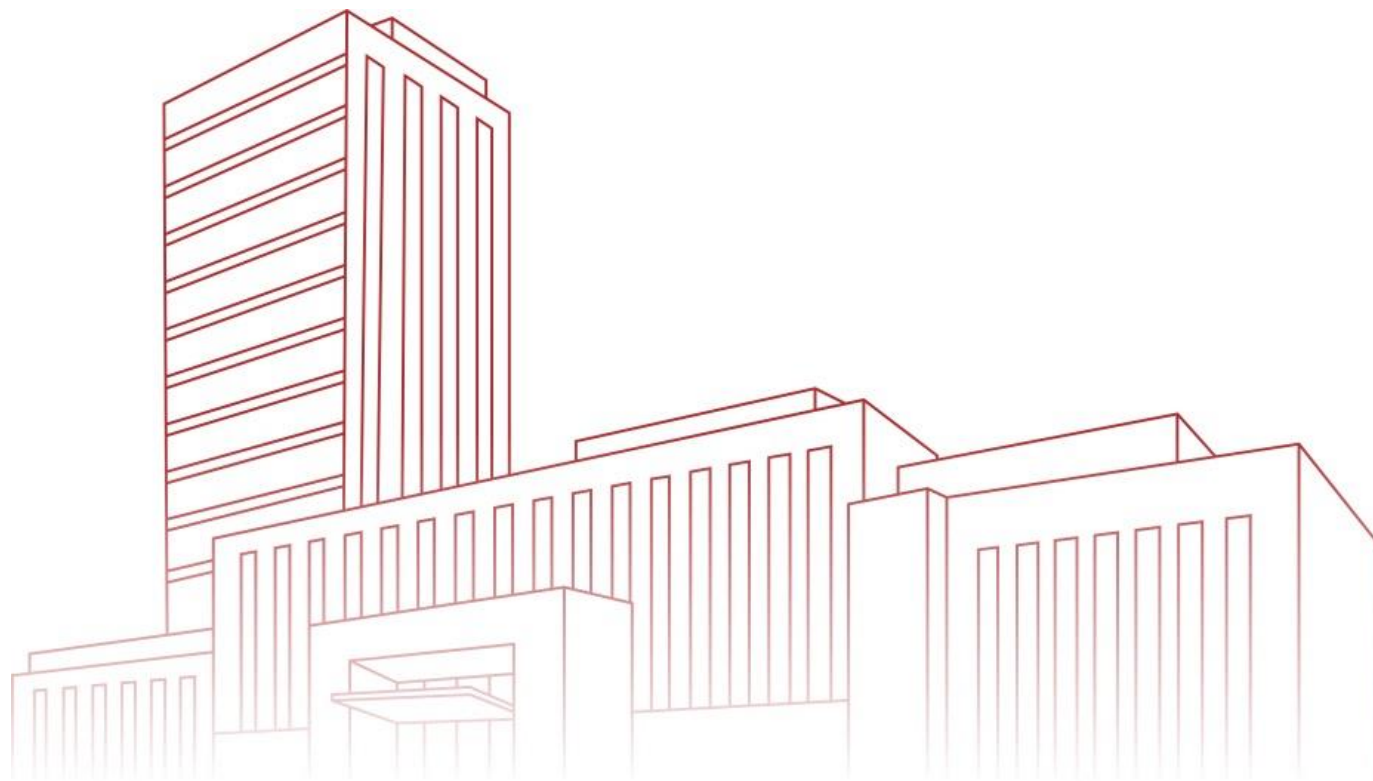
安泰经管学院
ANTAI COLLEGE
Economics · Management

*A world-class
business school
firmly rooted in China*

Antai College

- *History*
- *Vision & Mission*
- *Facts & Figures*

Part II



HISTORY

ANTAI COLLEGE ECONOMICS · MANAGEMENT

1896

University Founded

1903

College Launched

2000

Named Antai School of
Management because of
Aetna's Investment

2011

Triple Crown Accredited
First triple-crowned business
school in China : AACSB,
EQUIS and AMBA

2018

Institute of Industry Research

2022

Shenzhen Institute of Industry
Research,
SJTU-BOC Institute of
Technology

Mission & Vision



Vision

愿景

成为一所扎根中国的
世界级商学院
A world-class business school
firmly rooted in China



Mission

使命

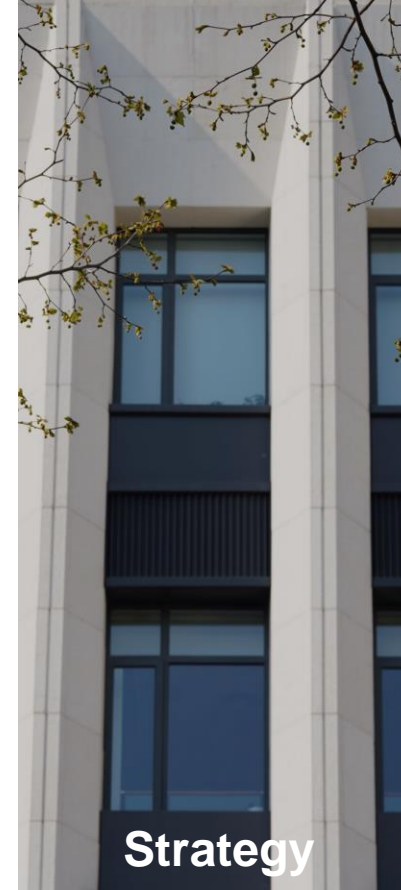
做一等学问
铸一等人才
成一等事业
Do first-class scholarship
Shape first-class talents
Enable first-class endeavors



Principle

方针

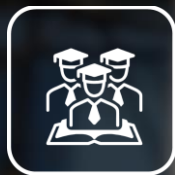
扎根中国管理实践
推动社会经济发展
完善经济管理理论
Be firmly rooted in the
management practice in China
Promote social and economic
development Improve economic
and management theory



Strategy

战略

纵横交错
知行合一
Two types of scholarship
horizontal [academic] and
vertical [industry], reinforcing
each other and connecting
theory with practice



Alumni

40000+



Department

8

- Accounting
- Data & Business Intelligence
- Economics
- Finance
- Management Science
- Marketing
- Organizational Management
- Information Technology & Innovation



Faculty

183

95% Doctoral degree



Students

5400+



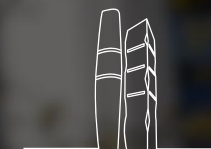
Campus

3

Shanghai



Shenzhen



Singapore



Facts & Figures



上海交通大学
SHANGHAI JIAO TONG UNIVERSITY



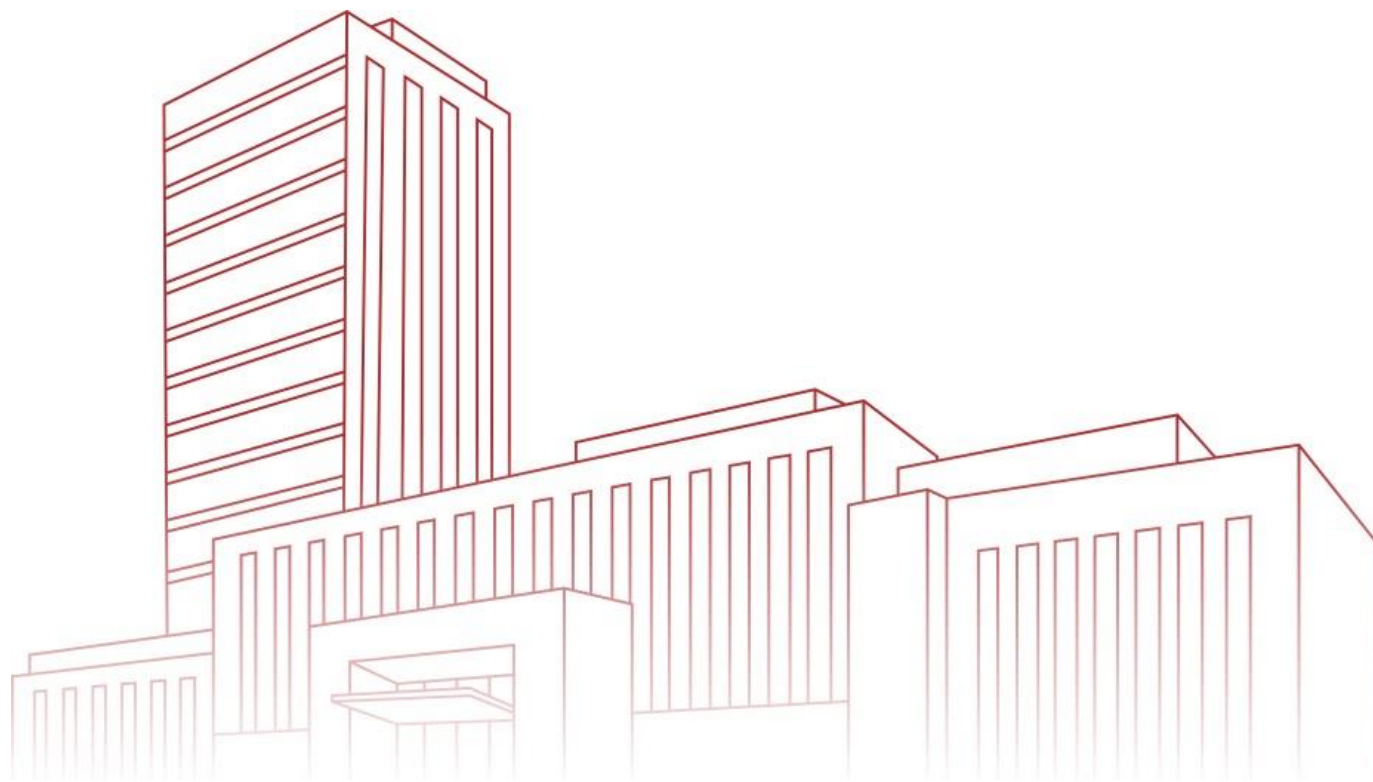
安泰经管学院
ANTAI COLLEGE
Economics · Management

*A world-class
business school
firmly rooted in China*

International Reputation

- *Rankings, Accreditations & Memberships*
- *International Partners*

Part III





QS World University Rankings by Subject 2023

32nd

Business &
Management Studies

39th

Accounting &
Finance

43th

Statistics &
Operational Research

56th

Economics &
Econometrics



Times Higher Education – China Subject Ratings, 2022

A+

Business
Administration

A+

Management Science
& Engineering

A+

Applied
Economics

Triple Accreditations



Financial Times Rankings 2022

58th

MBA
安泰经管学院

10th 2021

EMBA
安泰经管学院

18th

MIM
安泰经管学院

22nd

EE
安泰经管学院



中华人民共和国教育部
Ministry of Education of the People's Republic of China

A+

Business
Administration

A+

Management Science
& Engineering

A

Applied
Economics

Memberships



America **27**

- Columbia University
- Massachusetts Institute of Technology
- University of Chicago
- Yale University
- University of Michigan
- Princeton University
- University of Washington
- University of Southern California

Africa **1**

- University of Cape Town

54 Europe

- University of Cambridge
- University of Oxford
- ESCP Business School
- Universita Bocconi
- Luiss University
- University of Lausanne
- IE University
- University of Mannheim

20 Asia

- Waseda University
- Seoul National University
- Nanyang Technological University
- Thammasat University

5 Oceania

- University of Sydney
- University of New South Wales



International Partners

We are connected across the globe.





上海交通大学
SHANGHAI JIAO TONG UNIVERSITY



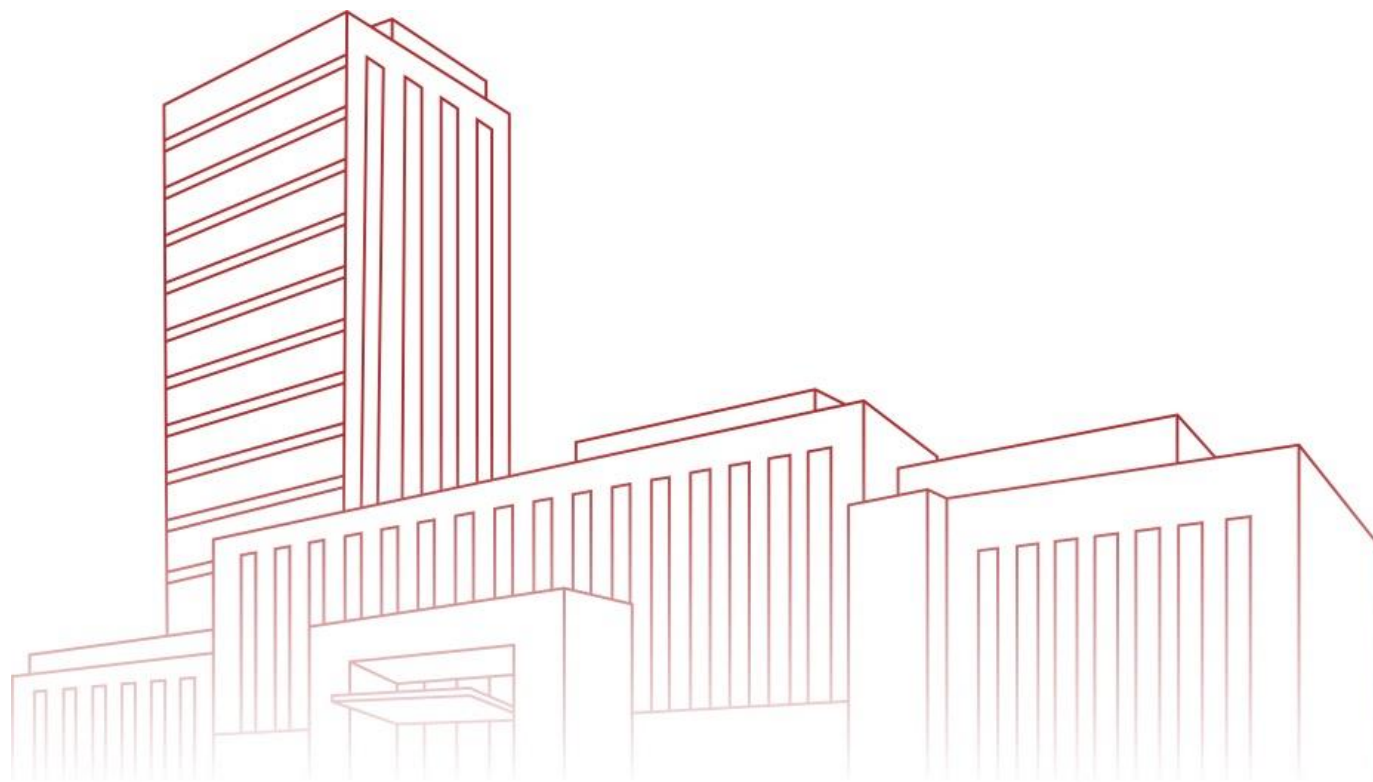
安泰经管学院
ANTAI COLLEGE
Economics · Management

*A world-class
business school
firmly rooted in China*

PROGRAMS

- *Taught in Chinese*
- *Taught in English*
- *International Joint Programs*

Part IV





Taught in Chinese

Chinese Degree Programs

- Undergraduate, Master, Ph.D
- MBA, EMBA
- Master of Technology Transfer
- CLGO
- SJTU ASEAN MBA Program

Chinese Non-Degree Programs

- Executive Education



Taught in English

International Degree Programs

- IMBA Program
- MIB Program

International Non-Degree Programs

- Doing Business in China (ONLINE)
- Antai Global Summer Program (AGSP)
- Antai Global Corporate Lab Program (Lab)



International Joint Programs

Degree Programs

- SJTU-UBC International MBA Program
- SJTU-SMU GPER Program
- SJTU-NTU EMBA Program

PROGRAMS

IMBA | Shanghai

- Full-English
- 70+ elective courses
- 8 concentrations
- International experience
- Free weekly Chinese mandarin courses



49

Students



50%

International students



12

Nationalities



30

Average age



38%

Female



7

Average years of
work experience

International Programs



MASTER OF INTERNATIONAL BUSINESS

*A world-class
business school
firmly rooted in China*

<https://www.acem.sjtu.edu.cn/en/mib/>



2-year Program Duration and Credits

35 credits of coursework (including 18 credits compulsory courses)
10-12 weeks internship or international exchange
Degree thesis

International Programs



Antai Global Summer School

*Antai Global Summer Program (AGSP) was initiated by Antai College of Economics and Management, Shanghai Jiao Tong University in 2013. Taught in English, this 3-week-long, credit-conferring certificate program integrates frontier knowledge of Antai Faculty and insights from corporate executives to offer a comprehensive view of Chinese business and culture in a globally engaging way. AGSP focuses on empowering young business leaders to **understand business and culture in China**.*

*So far, AGSP has welcomed more than **400 participants** of both business and non-business majors from **over 30 countries and regions***

International Programs

ANTAI GLOBAL SUMMER PROGRAM

<https://summerschool.sjtu.edu.cn/> 



UNIVERSITY OF CAMBRIDGE

I studied Asian studies in the UK. Before I came, I knew a lot about Japanese culture and Korean culture, but I felt in order to broaden my horizons and grasp East Asia societies, I really had to come to China and learn about Chinese culture, and see what China is like and how it's different from its neighbors.

— Carl-Fredrik



Economics &
Management
Lectures



Exclusive
Company
Visits



Chinese
Language &
Culture



Diverse
Student Mix



1 Certificate
3 Credits



Scholarships

 JULY 10-28, 2023

 SHANGHAI

 +86-21-6293 3262

 AGSP@sjtu.edu.cn

 10
Years

 30+
Nationalities

 400+
Participants



上海交通大学
SHANGHAI JIAO TONG UNIVERSITY



安泰经管学院
ANTAI COLLEGE
Economics • Management



DOING BUSINESS IN CHINA

China In-depth
Globally Relevant
Strategically Engaged

CHINA BUSINESS
UP CLOSE

DOING BUSINESS IN CHINA

<https://online.acem.sjtu.edu.cn/DBIC> 🔍



IBSSC BY NUMBERS

2006-2022

Countries & Regions

46

Schools & Organizations

354

Participants

1866

Speakers

264

RESEARCH

- *Antai Academic Profile of the most recent year*
- *Research Centers & Think Tanks*
- *Journals*
- *Publications*

Part V



ACADEMIC PROFILE

of the most recent year

198

SSCI/SCI
Peer-reviewed
Journals

101

Antai-defined
High-quality Papers

34

International
Case Studies

411

Publication
in Newspaper

50

Books and
Monographs

Research Centers

& Think Tanks

6 International Research Centers



- **2017** ACEM-NHH Norwegian School of Economics Research Center
- **2016** ACEM-Michigan Ross Research Center
- **2016** ACEM-Carlson School of Business Research Center
- **2016** ACEM-Copenhagen Business School Research Center
- **2014** SJTU-SMU Center for Quantitative Economics and Finance
- **2005** Sino-US Global Logistics Institute

3 National Think Tanks



- The Research Institute of China Development
- The Research Institute of Chinese Enterprise Development
- Institute of Industry Research

Industry Research Outcomes since 2018

2019

25 research teams

5044

Government, Enterprise,
Scientific Research project
funds: **50.44 million CNY**

208

208 research reports

75

Authored **75** study
cases

2020

30 research teams

1032

Visited **1,032 companies**

50

Published **50** research
monographs/textbooks

5

Released **5** industry
indexes and reports

2021

32 research teams

166

166 industry research
reports

151

151 research projects
approved

26

Won **26** approvals and
adoptions at the
national level

2022

31 research teams

298

Organized and participated
in **298 forums and
seminars**

331

331 academic papers

32

Won **32** approvals and
adoptions at the
provincial/ministerial
level

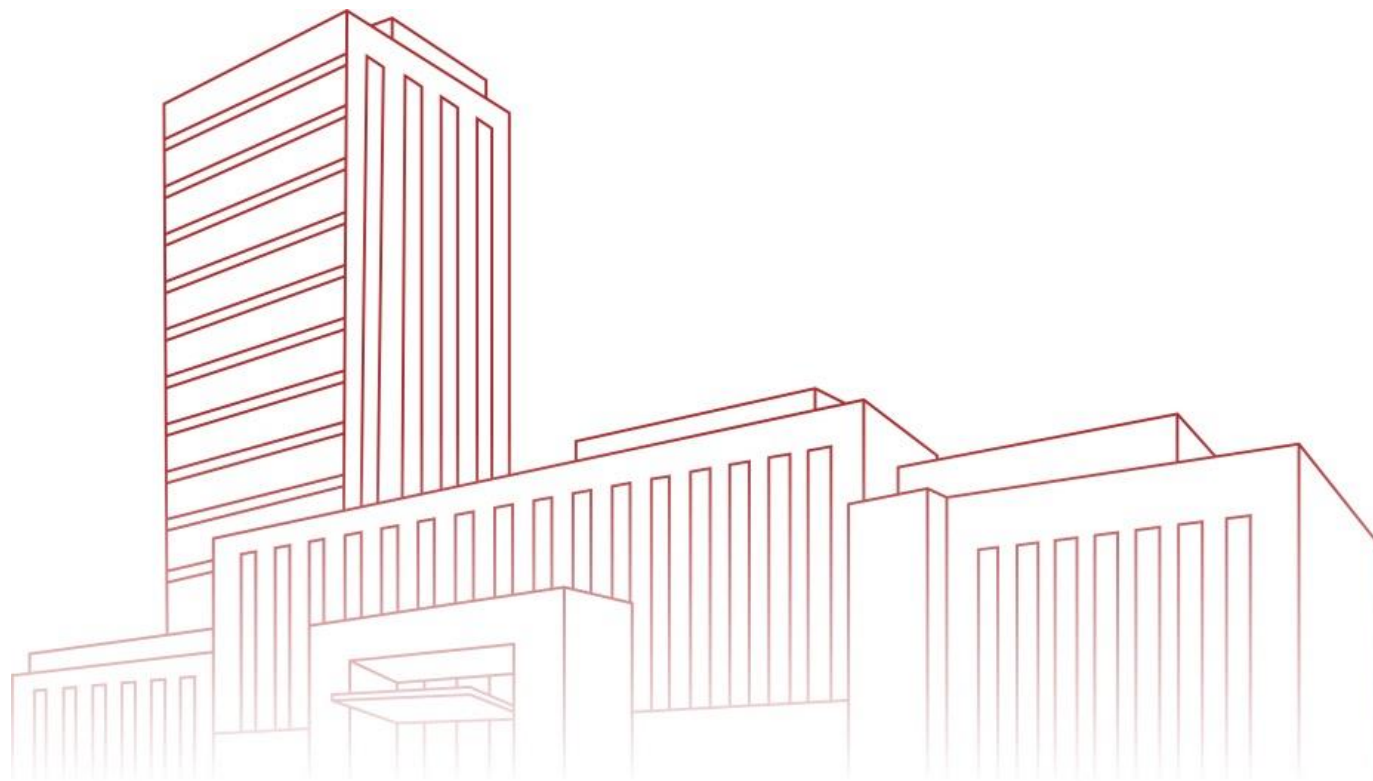
624

Supervised **624** student
thesis

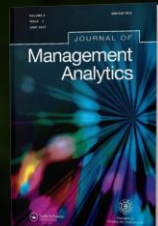
Impact

- *Academic*
- *Corporate*
- *Societal*

Part VI



Three academic journals



State Council, Ministry of Education,
Shanghai Municipal Government,
Ministry of Agriculture
.....

Antai Industry Review



Societal

Corporate

Academic



TOKYO 2020

19 students & alumni
Won 3 gold, 3 silver, 2 bronze

Bloomberg USNews REUTERS



NIKKEI/NET



411

198

SSCI/SCI Peer-reviewed Journals



Corporate funding researches
10 million RMB



全球商学院院长论坛
International Business School
Shanghai Conference

Founded in 2006
successfully hold 9 conferences

Impact



上海交通大学
SHANGHAI JIAO TONG UNIVERSITY

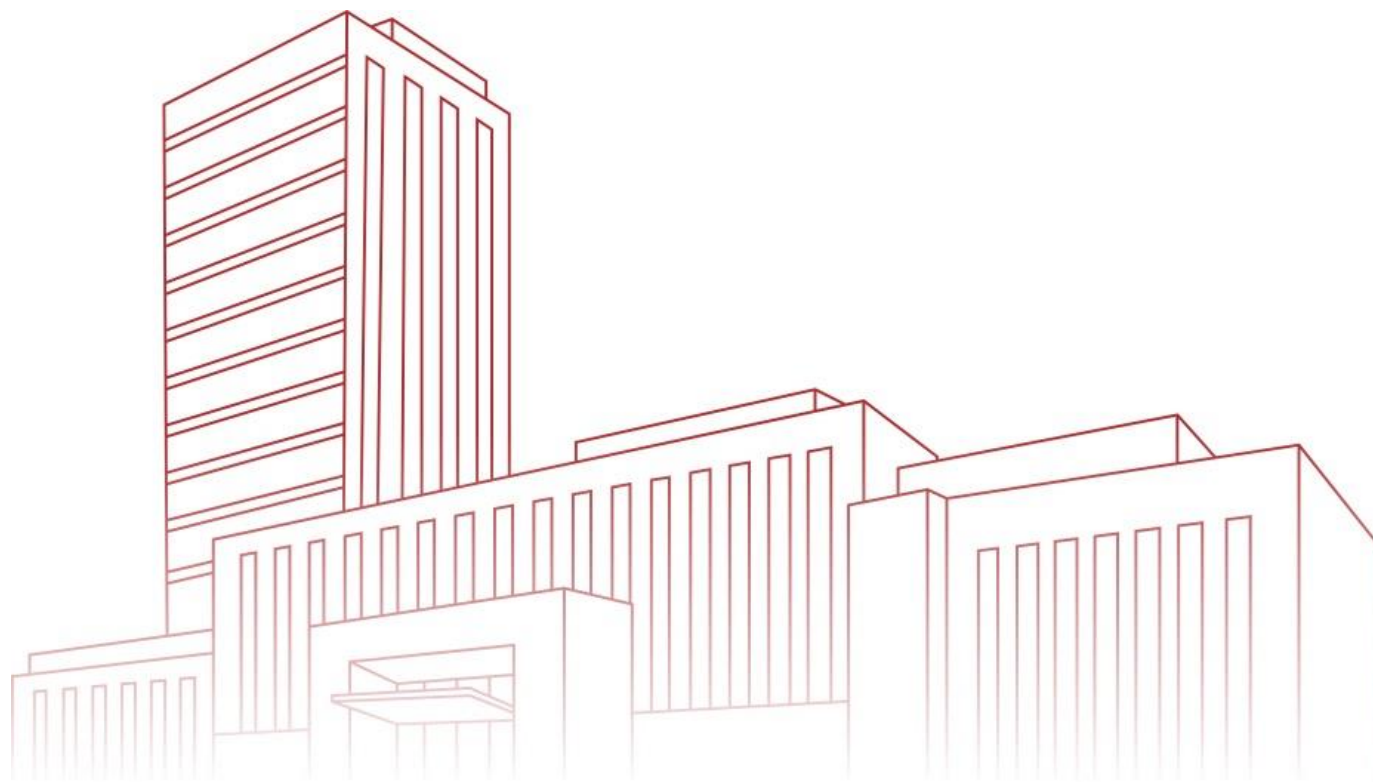


安泰经管学院
ANTAI COLLEGE
Economics · Management

*A world-class
business school
firmly rooted in China*

NEW INITIATIVES

Part VII





Institute of Industry Research (IIR), SJTU

- Launched in December 2018
- 32 industry research teams to date
- Implementing industry research strategy



Shenzhen Institute of Industry Research (SIIR), SJTU

- Launched in August 2022
- Promote technology and science development and boost economic transformation



SJTU-BOC Institute of Technology & Finance

- Launched in February 2022
- Collaboration between SJTU and Bank of China (BOC)
- Tech-finance institute, first Master in Technology Transfer in China

CONTACT US



上海交通大学
SHANGHAI JIAO TONG UNIVERSITY



安泰经管学院
ANTAI COLLEGE
Economics · Management

A world-class business school
firmly rooted in China

Headquarter – Shanghai International Office

✉ tracy01@sjtu.edu.cn

☎ 86-21-5230 2510

📍 1954 Huashan Road, Shanghai, 200030, China PRC

Antai Asia-Pacific Center – Singapore

✉ asean.mba@sjtu.edu.cn

☎ 65- 6601 4039

📍 1 Create Way, CREATE Tower, #14-01, Singapore 138602

<https://www.acem.sjtu.edu.cn/en/>

